



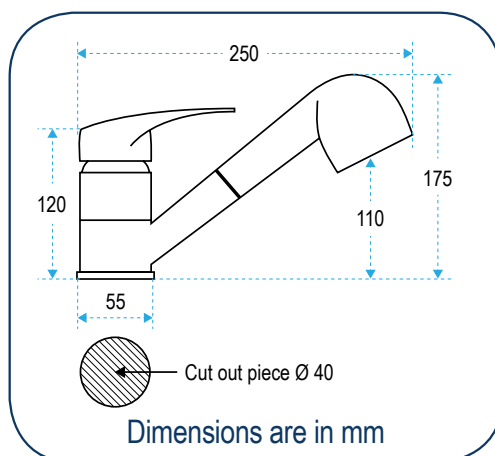
Nuova Rade

Marine - Plastics Technology Experts

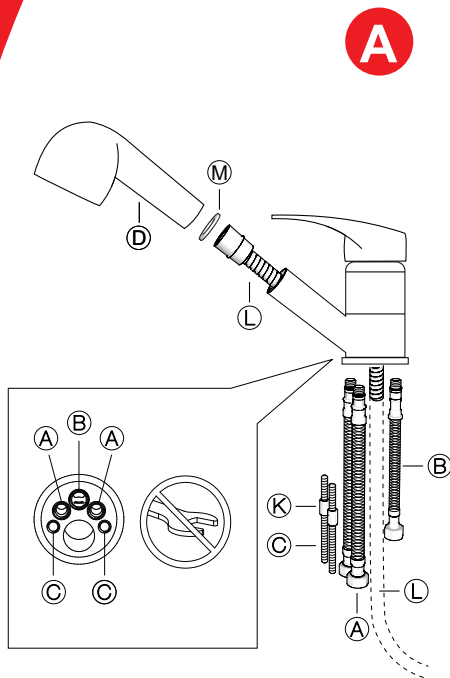
Instruction Manual

Faucet, w/ Adjust. Spray & Shower Tube 150cm

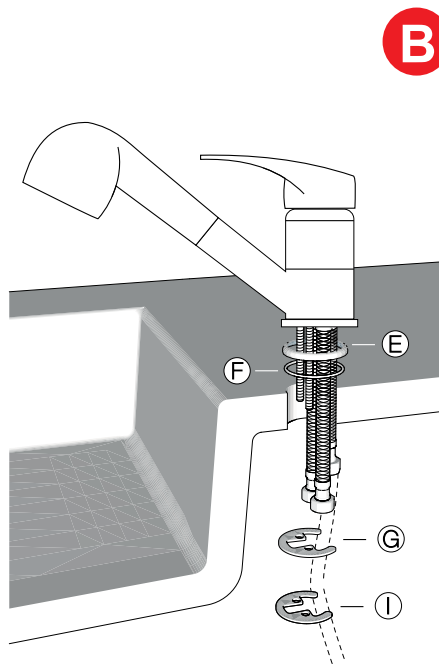
99960



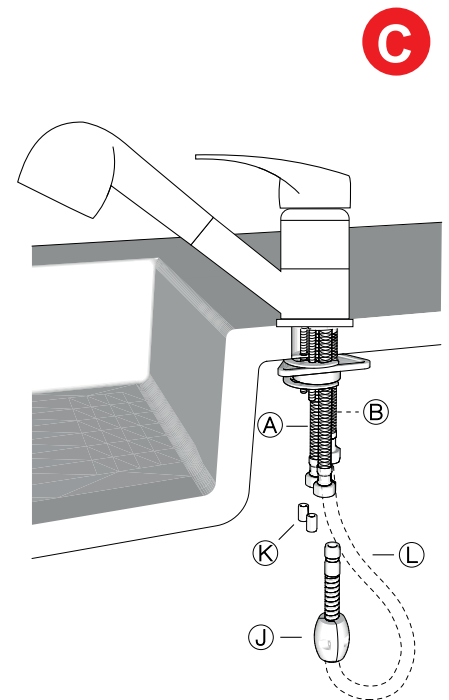
Faucet, w/ Adjust. Spray & Shower Tube 150cm



1. **Close** the hot and cold water supply.
2. **Screw on the mixer**, by hand, without making use of tools, the flexible connectors which supply cold and hot water (A), the short hose through which the already mixed water will come out (B), and finally the dowel screws (C). **Do not use tools to screw the hoses as if more force than necessary is used, these may break completely or partially or cause damage to the joints.** Excessive tightening can also damage the metal structurally, without the damage being apparent to the eye, which can cause over time, and without prior notice, a total breakage of the hose and the flooding of the bath.
3. **Unscrew** the nuts (K) from the dowel screws (C).
4. **Thread the hand shower (D)** at the top end of the flexible hose by placing the gasket (M) to ensure proper sealing and if necessary insert the flexible hose (L) through the spout mouth (in some models the hose is already inserted).



5. **Put the base ring (E)** if applicable (in some models it is already threaded onto the faucet).
6. **Place the round rubber washer (F)** that will work as joint between the faucet and the countertop.
7. **Insert the connections** into the countertop orifice to settle the faucet on the countertop.
8. **Place beneath** the rubber support washer (G) & metal horseshoe (I).



9. **Screw the nuts (K)** to the dowel screws (C) to secure the faucet to the worktop.
10. **Connect** the flexible hose (L) to the short connector (B).
11. **Place the lead counterweight (J)** at the lowest curved part of the flexible hose.
12. **Connect** the flexible connections to the water distribution system.
13. **Open the water supply** and ensure the correct seal.