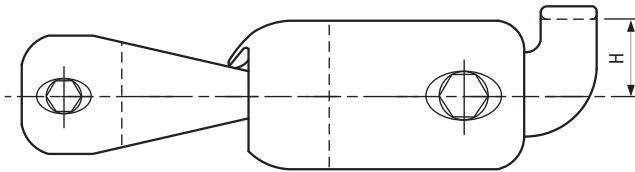
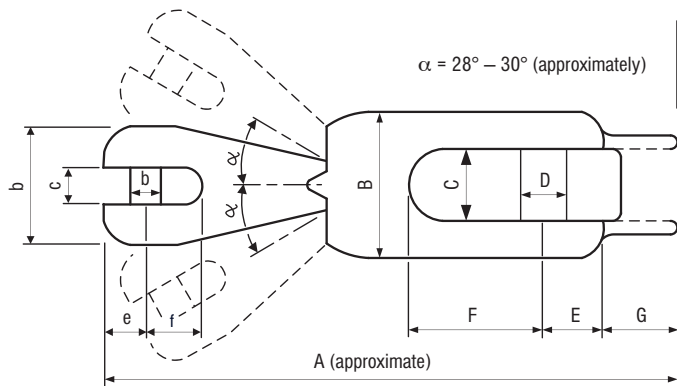


Flip Swivel

side view



top view



TYPE #	CHAIN DIAMETER		WHOLE LENGTH APPROXIMATELY A	CHAIN PART DIMENSIONS B×C×D×E×F	ANCHOR PART DIMENSIONS B×C×D×E×F	FLIPPING BRIDGE DIMENSIONS G×H	BREAKING LOAD		MAXIMUM ANCHOR WEIGHT	
	mm	inch					kgf	lbs	non ultra anchor kg	ultra anchor kg
ufs 06	6	1/4"	121	25×7,6×7×9×11	35×16×11×13×31	14×17	3315	7308	10	12
	6	1/4"								
ufs 08	8	5/16"	147,5	30×9,4×9×11×14,5	40×19×13×16×36,5	18,5×20	5630	12410	18	21
ufs 10	8	5/16"	168	35×11,6×11×13×17	45×21×14,5×18×40	21×22,5	8540	18830	30	35
	10	3/8"								
ufs 13	12	1/2"	211,5	45×15,2×14,5×16,5×23	55×26×18×23×51,5	26,5×30	17510	38600	50	60
ufs 16	13	1/2"	250	53×18,2×18×20×27	65×30,6×22×27×59	30×36	28950	63820	85	100
	16	5/8"								
ufs 20	16	5/8"	309	65×23×22×26×34	80×38×26×32×72	40×40,5	42200	93030	170	200
ufs 26	20	3/4"	358	80×30×26×33×43	100×48×32×40×77	50×51	57900	127640	300	360
	26	1"								

* Custom ones without flipping bridge and flipping nub can also be made.